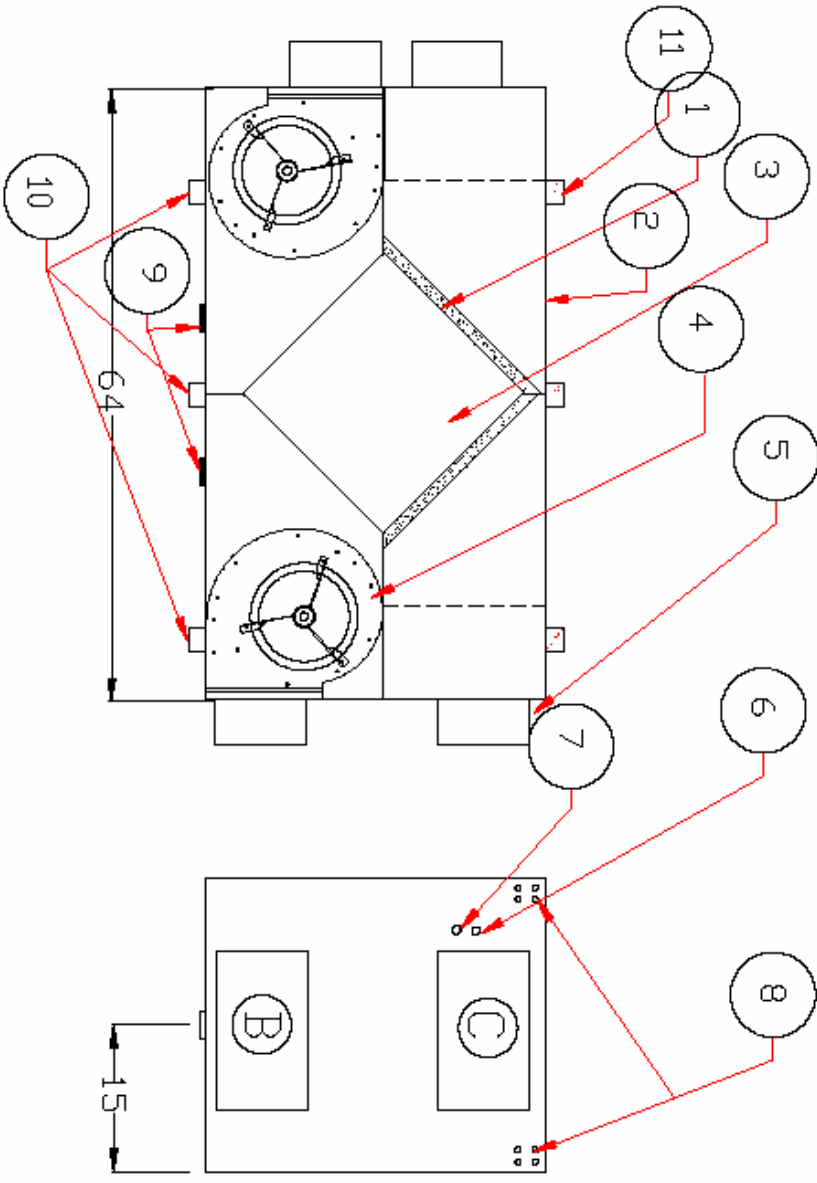
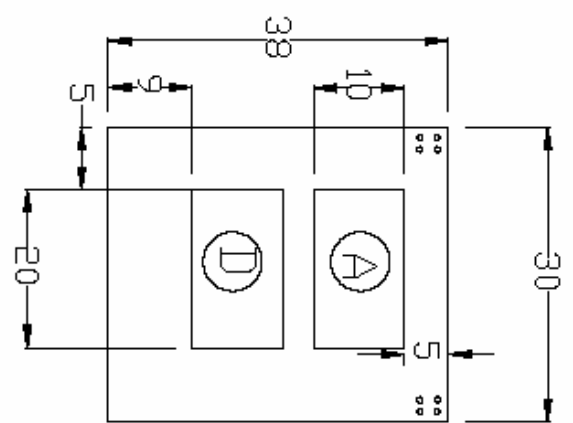


- 1) FILTERS 1" PLEATED
- 2) CABINET 20 GA GALV INZINED STEEL or .050 WHITE ALUMINUM
- 3) CROSSFLOW CORE- POLY, ENTHALPY
- 4) BLOWERS DIRECT DRIVE FC DWDI GT12-10, 1HP
- 5) DUCT CONNECTIONS 20X10, 4" COLLARS
- 6) REMOTE CONNECTIONS
- 7) SINGLE POINT ELECTRICAL CONNECTION 208V- 230V
- 8) MOUNTS FOR HANGER ASSEMBLY
- 9) 5/8" DRAINS
- 10) LATCHES
- 11) HINGES



A FROM OUTSIDE  
 B TO SPACE  
 C FROM SPACE  
 D TO OUTSIDE

REV.	DESCRIPTION	BY	DATE
NEW		JKG	02/07
SCALE:	NTS		
DIMENSIONS:	INCH		

CONFIDENTIAL PROPRIETARY INFORMATION  
 THIS DOCUMENT CONTAINS CONFIDENTIAL INFORMATION WHICH IS THE PROPERTY OF NU-AIR VENTILATION AND SHALL NOT BE REVEALED TO OTHERS OR USED EXCEPT FOR THE PURPOSES FOR WHICH IT HAS BEEN SUPPLIED.

NU-AIR VENTILATION  
 16 NELSON STREET  
 WINDSOR, NOVA SCOTIA  
 CANADA, B0N 2T0  
 TEL: (902) 798 2261  
 FAX: (902) 798 2557

TITLE: NU1600 COMMERCIAL HRV

DRAWING NUMBER: NUISQSHOPNEW  
 GROUP: COMM  
 SHEET 1 OF 1

