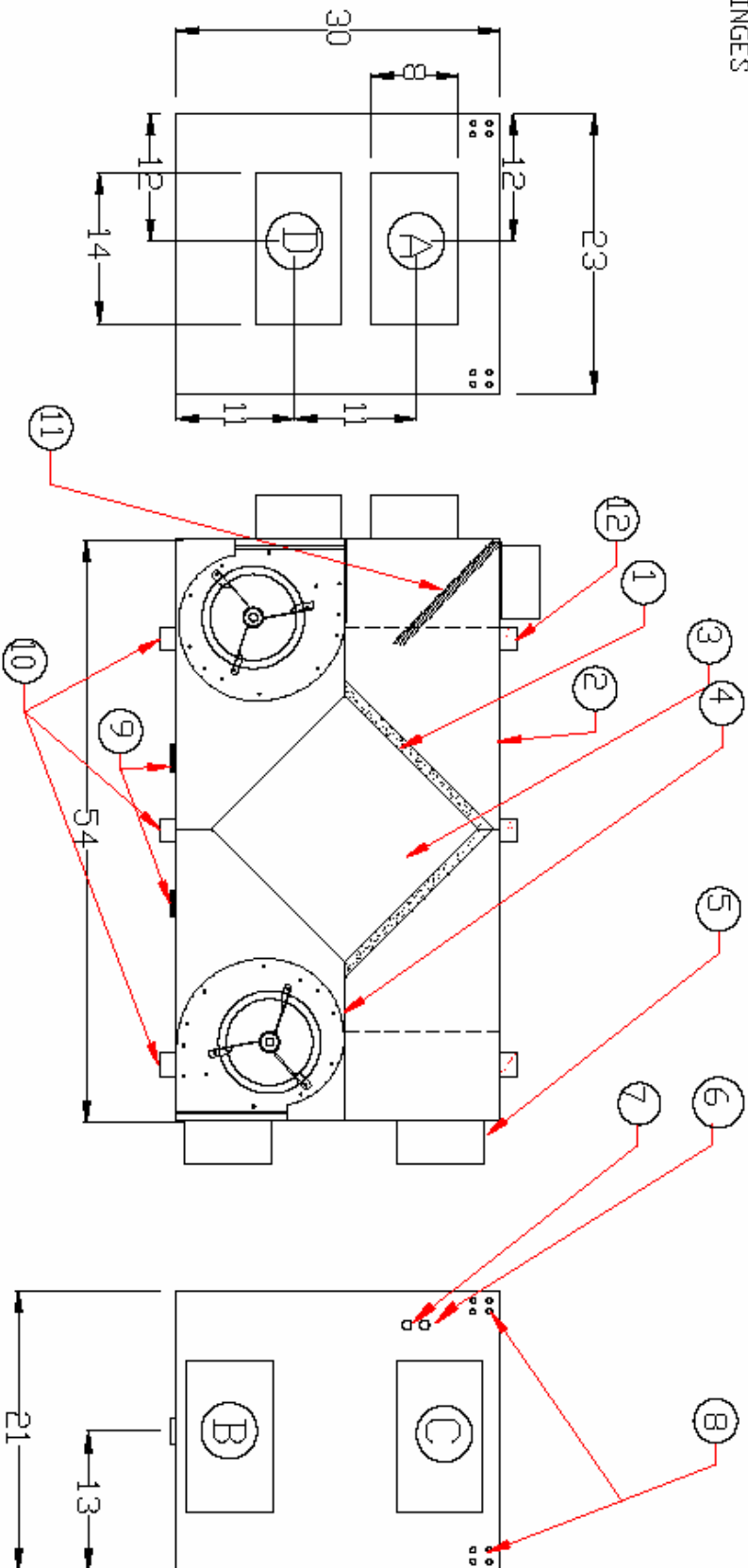


- 1) FILTERS 1" PLEATED
- 2) CABINET 20 GA GALVANIZED STEEL OR 14GA WHITE ALUMINUM
- 3) CROSS FLOW CORE - POLY, ENTHALPHY
- 4) BLOWERS DIRECT DRIVE FC DWDI G9, 1/2 hp
- 5) DUCT CONNECTIONS 14XB, 4" COLLARS (4)
- 6) REMOTE CONNECTIONS
- 7) SINGLE POINT ELECTRICAL CONNECTION 115V
- 8) MOUNTS FOR HANGER ASSEMBLY
- 9) 5/8" DRAINS
- 10) LATCHES
- 11) OPTIONAL DEFROST DAMPER
- 12) HINGES



A FROM OUTSIDE  
 B TO SPACE  
 C FROM SPACE  
 D TO OUTSIDE

REV#	DESCRIPTION	BY	DATE
NEW		BKG	03/07
SCALE:	NTS		
DIMENSIONS:	INCH		

CONFIDENTIAL PROPRIETARY INFORMATION  
 THIS DOCUMENT CONTAINS CONFIDENTIAL INFORMATION WHICH IS THE PROPERTY OF NU-AIR VENTILATION AND SHALL NOT BE REVEALED TO OTHERS OR USED EXCEPT FOR THE PURPOSES FOR WHICH IT HAS BEEN SUPPLIED.

**NU-AIR VENTILATION**  
 16 NELSON STREET  
 WINDSOR, NOVA SCOTIA  
 CANADA, B0N 2T0  
 TEL: (902) 798 2261  
 FAX: (902) 798 2557

TITLE: **NU1200 COMMERCIAL HRV**

DRAWING NUMBER:	NU1200
GROUP:	COMM
SHEET	1 OF 1

